

Kurs-Dokumentation



Zentrum für Informatik ZFI AG

Troubleshooting and Optimizing Database Servers Using Microsoft SQL Server 2005 (S9TR) - IT Ausbildung nach Mass

<http://www.zfi.ch/S9TR>

Weitere Infos finden Sie unter www.zfi.ch oder via Adresse:

Zentrum für Informatik ZFI AG
Zentralsekretariat
Technoparkstrasse 1
CH-8005 Zürich
Telefon: 044 732 40 00
Telefax: 044 732 40 09

Zürich, Basel, Bern, Zürich, Schweiz

Titel	Troubleshooting and Optimizing Database Servers Using Microsoft SQL Server
Untertitel	effiziente Fehler-Diagnose und Optimierung
Einleitung	Ziel dieses zweitägigen ZFI/Microsoft-Workshops ist es, Datenbankadministratoren in Unternehmensumgebungen die Fertigkeiten zum Bestimmen und Behandeln von Leistungsproblemen mit Microsoft SQL Server 2005 zu vermitteln. Der Schwerpunkt dieses Workshops liegt auf der Vermittlung des übergreifenden Problembehandlungsprozesses. Dazu gehören das Festlegen von Überwachungsstandards und -grundlagen, das Bestimmen von Leistungsschwellen und das Eingrenzen des Untersuchungsbereichs auf bestimmte Probleme.
Ihr Nutzen	
Voraussetzungen	Before attending this course, students must have: Working knowledge of SQL Server 2005 architecture including indexing, SQL execution plans, and SQL Server basic configuration. Basic monitoring and troubleshooting skills. For example, students should have used Sysmon and Perfmon on the job. Working knowledge of the operating system and platform. Students should understand how the operating system integrates with the database, what the platform or operating system can do, and the interaction between the operating system and the database. Basic understanding of server architecture such as CPU and memory utilization and disk input/output (I/O). Basic knowledge of application architecture. Students should know how applications can be designed in three layers, what applications can do, the interaction between applications and the database, and the interaction between the database and the platform or operating system. Understanding of Transact-SQL syntax and programming logic. Basic knowledge of Microsoft Windows networking. Students should understand how Domain Name Service (DNS) operates and how servers communicate between domains. Familiarity with SQL Server 2005 features, tools, and technologies. Microsoft Certified Technology Specialist: Microsoft SQL Server 2005 credential or equivalent experience. In addition, it is recommended, but not required, that students have completed: Course SST9/2778, Writing Queries Using Microsoft SQL Server 2005 Transact-SQL. Course S9IM/2779, Implementing a Microsoft SQL Server 2005 Database. Course S9MA/2780, Maintaining a Microsoft SQL Server 2005 Database.
Teilnehmerkreis	This course is intended for current professional database administrators who have three or more years of on-the-job experience administering SQL Server database solutions in an enterprise environment.
Unterlagen	Original Microsoft Kursunterlagen
Folgekurse	
Inhalt	<ul style="list-style-type: none"> - Building a Monitoring Solution for SQL Server Performance Issues - Narrowing Down a Performance Issue to an Environment Area - Guidelines for Monitoring Database Servers and Instances by Using Profiler and Sysmon - Guidelines for Auditing and Comparing Test Results - Lab: Building a Monitoring Solution for SQL Server Performance Issues

- Troubleshooting Database and Database Server Performance Issues
- Narrowing Down a Performance Issue to a Database Object
- How Profiler Can Help Narrow a Search to a Specific Issue
- How the SQLdiag Tool Can Be Used to Analyze Outputs
- Lab: Troubleshooting Database and Database Server Performance Issues

- Optimizing the Query Performance Environment
- The Methodology of Optimizing a Query Environment
- The Query Performance Troubleshooting Process
- Lab: Optimizing the Query Performance Environment

- Troubleshooting SQL Server Connectivity Issues
- The Methodology of Troubleshooting SQL Server Connectivity Issues.
- Areas to Troubleshoot for Common Connectivity Issues.
- What Are SQL Server 2005 Endpoints?
- Lab: Troubleshooting SQL Server Connectivity Issues

- Troubleshooting SQL Server Data Issues
- The Methodology of Troubleshooting SQL Server Data Issues
- The Process of Troubleshooting Data Integrity Issues
- How Torn Pages Can be Resolved Using a Single-Page Restore
- Lab: Troubleshooting SQL Server Data Issues

- Troubleshooting SQL Server Data Concurrency Issues
- The Methodology of Troubleshooting Concurrency Issues
- What Are SQL Server Latches?
- Activity: Choosing a Blocking Monitoring Solution
- Lab: Troubleshooting SQL Server Data Concurrency Issues

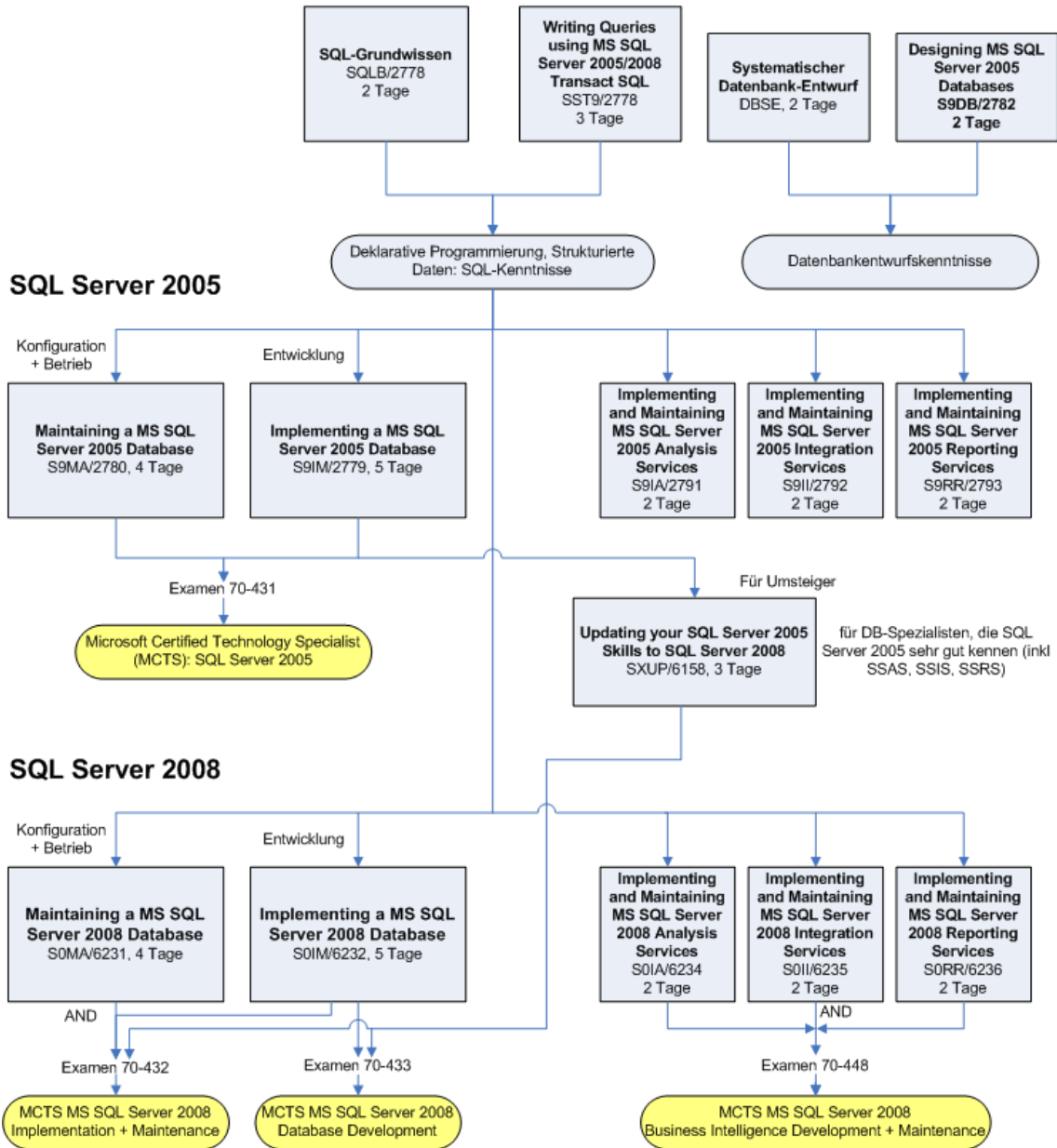
Beitrag

Der Teilnehmerbeitrag versteht sich rein netto. Das ZFI ist (gemäss MwSt-Gesetz) nicht Mehrwertsteuerpflichtig und erhebt somit keine MwSt. Bei länger als einen Monat dauernden Lehrgängen ist die Zahlung des Teilnehmerbeitrages in mehreren Raten möglich (pro rata temporis).

Bildungsweg Microsoft SQL Server



Datenbanken und SQL-Server Grundlagen und Technologie



© ZFI AG 2009