

# Kurs-Dokumentation



**Zentrum für Informatik ZFI AG**

**Implementing Reports and Data Models with  
Microsoft SQL Server 2012 (S1MP) - IT  
Ausbildung nach Mass**

<http://www.zfi.ch/S1MP>

Weitere Infos finden Sie unter [www.zfi.ch](http://www.zfi.ch) oder via Adresse:

**Zentrum für Informatik ZFI AG  
Zentralsekretariat  
Technoparkstrasse 1  
CH-8005 Zürich  
Telefon: 044 732 40 00  
Telefax: 044 732 40 09**

**Zürich, Basel, Bern, Zürich, Schweiz**

<b>Titel</b>	<b>Implementing Reports and Data Models with Microsoft SQL Server 2012</b>
<b>Untertitel</b>	
<b>Einleitung</b>	
<b>Ihr Nutzen</b>	
<b>Voraussetzungen</b>	
<b>Teilnehmerkreis</b>	
<b>Unterlagen</b>	
<b>Folgekurse</b>	
<b>Inhalt</b>	<ul style="list-style-type: none"><li>- Introduction to business intelligence and data modeling</li><li>- Introduction to business intelligence</li> <li>- The Microsoft business intelligence platform</li> <li>- Implementing reports with reporting services</li><li>- Introduction to reporting services</li> <li>- Creating a report with report designer</li> <li>- Grouping and aggregating data in a report</li> <li>- Showing data graphically</li> <li>- Filtering reports using parameters</li> <li>- Supporting self-service reporting</li><li>- Introduction to report builder</li> <li>- Creating reusable report items</li> <li>- Managing a reporting infrastructure</li><li>- Managing security</li> <li>- Managing report execution</li> <li>- Delivering reports with subscription</li></ul>

- Troubleshooting reporting services
  
- Creating multidimensional databases
- Introduction to multidimensional analysis
  
- Creating data sources and data source views
  
- Creating a cube
  
- Overview of cube security
  
- Working with cubes and dimensions
- Configuring dimensions
  
- Defining attribute hierarchies
  
- Sorting and grouping attributes
  
- Working with measures and measure groups
- Working with measures
  
- Working with measures groups
  
- Introduction to MDX
- MDX fundamentals
  
- Adding calculations to a cube
  
- Using MDX to query a cube
  
- Customizing cube functionality
- Implementing key performance indicators

- Implementing actions
  
- Implementing perspectives
  
- Implementing translations
  
- Implementing a tabular data model by using Microsoft PowerPivot
- Introduction to tabular data models and PowerPivot technologies
  
- Creating a tabular data model by using PowerPivot for
  
- Sharing a PowerPivot workbook and using PowerPivot gallery
  
- Introduction to data analysis expression (DAX)
- DAX fundamentals
  
- Using DAX to create calculated columns and measures in a tabular data model
  
- Implementing an analysis services tabular data model
- Introduction to analysis services tabular data model projects
  
- Implementing an analysis services tabular data model in business intelligence development studio
  
- Creating Data Visualizations with power view
- Introduction to power view
  
- Visualizing data with power view
  
- Performing predictive analysis with data mining
- Overview of Data Mining

- Using the data mining add-in for excel
- Creating a custom data mining solution
- Validating a data mining model
- Consuming a data mining model

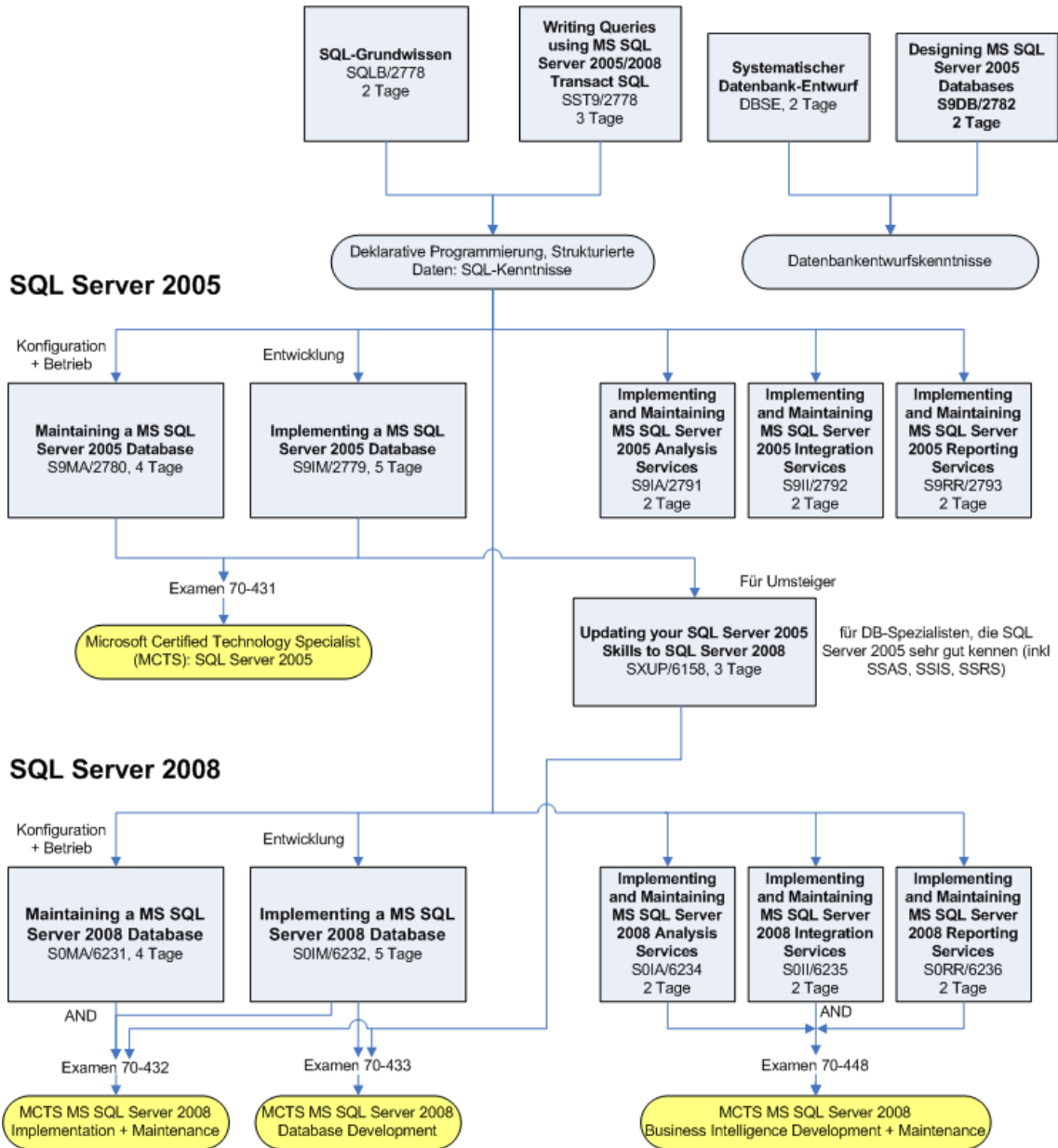
**Beitrag**

**Der Teilnehmerbeitrag versteht sich rein netto. Das ZFI ist (gemäss MwSt-Gesetz) nicht Mehrwertsteuerpflichtig und erhebt somit keine MwSt. Bei länger als einen Monat dauernden Lehrgängen ist die Zahlung des Teilnehmerbeitrages in mehreren Raten möglich (pro rata temporis).**

# Bildungsweg Microsoft SQL Server



## Datenbanken und SQL-Server Grundlagen und Technologie



© ZFI AG 2009