

Kurs-Dokumentation



Zentrum für Informatik ZFI AG

Implementing Reports and Data Models with Microsoft SQL Server 2012 (S1MP-0312) -IT Ausbildung nach Mass

<http://www.zfi.ch/S1MP-0312>

Weitere Infos finden Sie unter www.zfi.ch oder via Adresse:

**Zentrum für Informatik ZFI AG
Zentralsekretariat
Technoparkstrasse 1
CH-8005 Zürich
Telefon: 044 732 40 00
Telefax: 044 732 40 09**

Zürich, Basel, Bern, Zürich, Schweiz

Titel	Implementing Reports and Data Models with Microsoft SQL Server 2012
Untertitel	
Einleitung	
Ihr Nutzen	
Voraussetzungen	
Teilnehmerkreis	
Unterlagen	
Folgekurse	
Inhalt	<ul style="list-style-type: none">- Introduction to business intelligence and data modeling- Introduction to business intelligence - The Microsoft business intelligence platform - Implementing reports with reporting services- Introduction to reporting services - Creating a report with report designer - Grouping and aggregating data in a report - Showing data graphically - Filtering reports using parameters - Supporting self-service reporting- Introduction to report builder - Creating reusable report items - Managing a reporting infrastructure- Managing security - Managing report execution - Delivering reports with subscription

- Troubleshooting reporting services

- Creating multidimensional databases
- Introduction to multidimensional analysis

- Creating data sources and data source views

- Creating a cube

- Overview of cube security

- Working with cubes and dimensions
- Configuring dimensions

- Defining attribute hierarchies

- Sorting and grouping attributes

- Working with measures and measure groups
- Working with measures

- Working with measures groups

- Introduction to MDX
- MDX fundamentals

- Adding calculations to a cube

- Using MDX to query a cube

- Customizing cube functionality
- Implementing key performance indicators

- Implementing actions

- Implementing perspectives

- Implementing translations

- Implementing a tabular data model by using Microsoft PowerPivot
- Introduction to tabular data models and PowerPivot technologies

- Creating a tabular data model by using PowerPivot for

- Sharing a PowerPivot workbook and using PowerPivot gallery

- Introduction to data analysis expression (DAX)
- DAX fundamentals

- Using DAX to create calculated columns and measures in a tabular data model

- Implementing an analysis services tabular data model
- Introduction to analysis services tabular data model projects

- Implementing an analysis services tabular data model in business intelligence development studio

- Creating Data Visualizations with power view
- Introduction to power view

- Visualizing data with power view

- Performing predictive analysis with data mining
- Overview of Data Mining

- Using the data mining add-in for excel
- Creating a custom data mining solution
- Validating a data mining model
- Consuming a data mining model

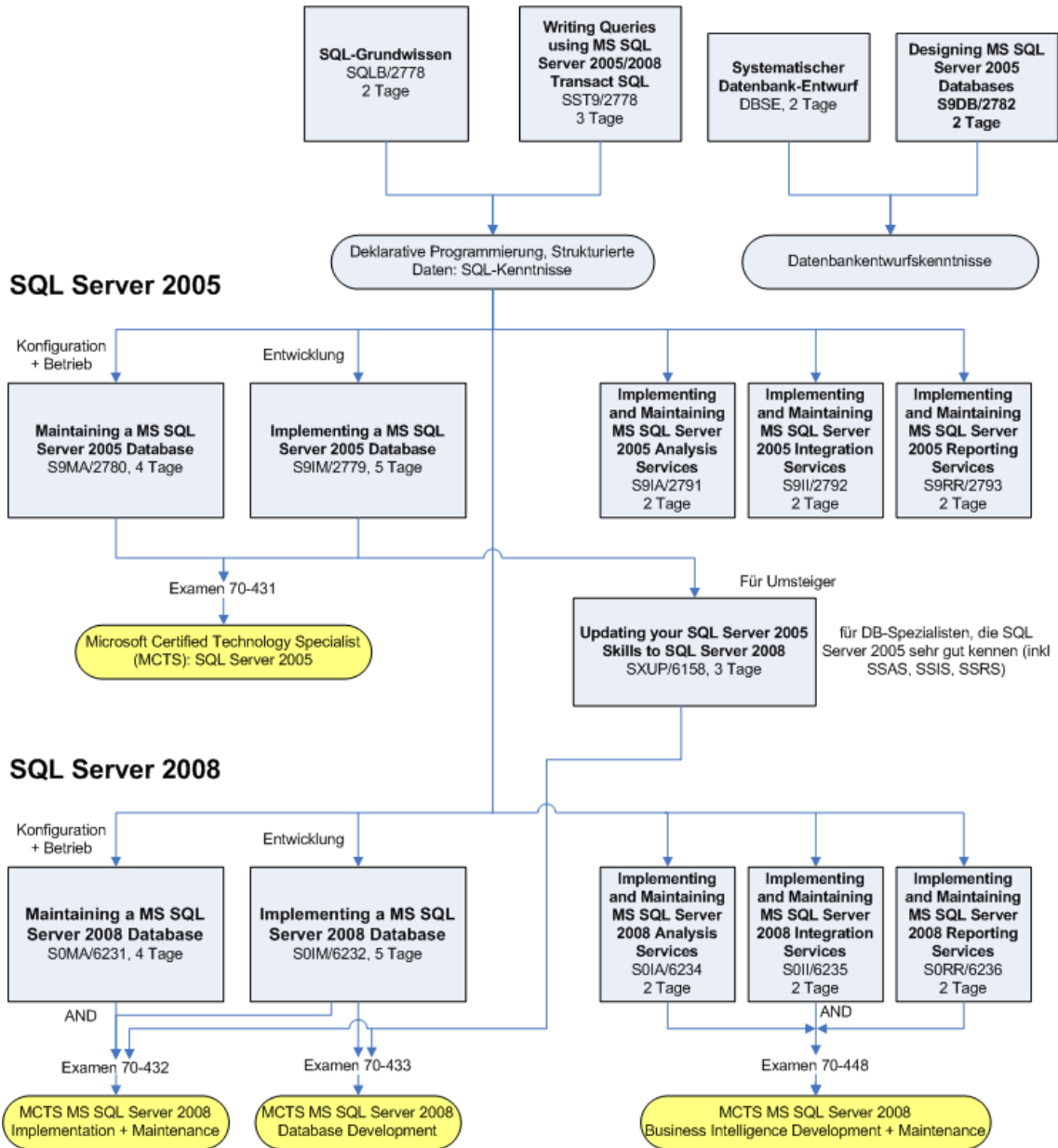
Beitrag

Der Teilnehmerbeitrag versteht sich rein netto. Das ZFI ist (gemäss MwSt-Gesetz) nicht Mehrwertsteuerpflichtig und erhebt somit keine MwSt. Bei länger als einen Monat dauernden Lehrgängen ist die Zahlung des Teilnehmerbeitrages in mehreren Raten möglich (pro rata temporis).

Bildungsweg Microsoft SQL Server



Datenbanken und SQL-Server Grundlagen und Technologie



© ZFI AG 2009