

Kurs-Dokumentation



Zentrum für Informatik ZFI AG

Maintaining a Microsoft SQL Server 2012 Database (S1MA) - IT Ausbildung nach Mass

<http://www.zfi.ch/S1MA>

Weitere Infos finden Sie unter www.zfi.ch oder via Adresse:

**Zentrum für Informatik ZFI AG
Zentralsekretariat
Technoparkstrasse 1
CH-8005 Zürich
Telefon: 044 732 40 00
Telefax: 044 732 40 09**

Zürich, Basel, Bern, Zürich, Schweiz

| | |
|------------------------|---|
| Titel | Maintaining a Microsoft SQL Server 2012 Database |
| Untertitel | |
| Einleitung | dieser Kurs ist in Vorbereitung. |
| Ihr Nutzen | |
| Voraussetzungen | |
| Teilnehmerkreis | |
| Unterlagen | |
| Folgekurse | |
| Inhalt | <ul style="list-style-type: none">- Introduction to SQL Server 2012 and its Toolset- Introduction to the SQL Server Platform - Working with SQL Server Tools - Configuring SQL Server Services - Preparing Systems for SQL Server 2012- Overview of SQL Server Architecture - Planning Server Resource Requirements - Pre-installation Testing for SQL Server - Installing and Configuring SQL Server 2012- Preparing to Install SQL Server - Installing SQL Server - Upgrading and Automation Installation - Working with Database- Overview of SQL Server Databases - Working with Files and Filegroups - Moving Database Files - Understanding SQL Server 2012 Recovery Models- Backup Strategies - Understanding SQL Server Transaction Logging - Planning a SQL Server Backup Strategy - Backup of SQL Server 2012 Database- Backing up Database and Transaction Logs - Managing Database Backups |

- Working with Backup Options

- Restoring SQL Server 2012 Database- Understanding the Restore Process

- Restoring Databases

- Working with Point-in-time recovery

- Restoring System Databases and Individual Files

- Importing and Exporting Data- Transferring Data to/from SQL Server

- Importing and Exporting Table Data

- Inserting Data in Bulk

- Authenticating and Authorizing Users- Authenticating Connections to SQL Server

- Authorizing Logins to Access Databases

- Authorizing Across Servers

- Assigning Server and Database Roles- Working with Server Roles

- Working with Fixed Database Roles

- Creating User-defined Database Roles

- Authorizing Users to Access Resources- Authorizing Users Access to Objects

- Authorizing Users to Execute Code

- Configuring Permissions at the Schema Level

- Auditing SQL Server Environments- Options for Auditing Data Access in SQL

- Implementing SQL Server Audit

- Managing SQL Server Audit

- Automating SQL Server 2012 Management- Automating SQL Server Management
- Working with SQL Server Agent
- Managing SQL Server Agent Jobs

- Configuring Security for SQL Server Agent- Understanding SQL Server Agent Security
- Configuring Credentials
- Configuring Proxy Accounts

- Monitoring SQL Server 2012 with Alerts and Notifications- Configuration of Database Mail
- Monitoring SQL Server Errors
- Configuring Operators, Alerts and Notifications

- Performing Ongoing Database Maintenance- Ensuring Database Integrity
- Maintaining Indexes
- Automating Routine Database Maintenance

- Tracing Access to SQL Server 2012- Capturing Activity using SQL Server Profiler
- Improving Performance with the Database Engine Tuning Advisor
- Working with Tracing Options

- Monitoring SQL Server 2012- Monitoring Activity
- Capturing and Managing Performance Data
- Analyzing Collected Performance Data

- Managing Multiple Servers- Working with Multiple Servers
- Virtualizing SQL Server

- Deploying and Upgrading Data-Tier Applications
- Troubleshooting Common SQL Server 2012 Administrative Issues- SQL Server Troubleshooting Methodology
- Resolving Service-related Issues
- Resolving Concurrency Issues
- Resolving Login and Connectivity Issues

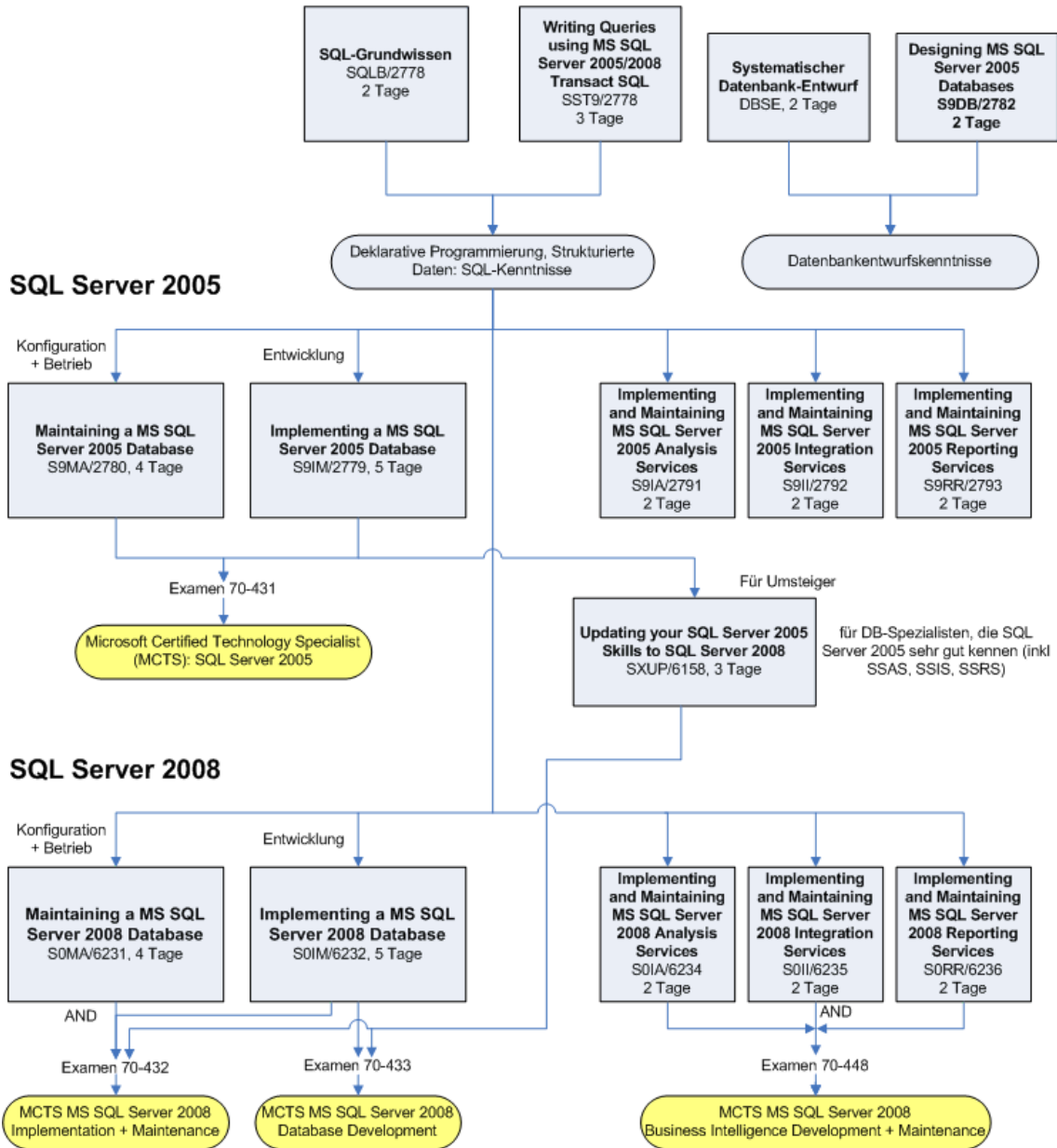
Beitrag

Der Teilnehmerbeitrag versteht sich rein netto. Das ZFI ist (gemäss MwSt-Gesetz) nicht Mehrwertsteuerpflichtig und erhebt somit keine MwSt. Bei länger als einen Monat dauernden Lehrgängen ist die Zahlung des Teilnehmerbeitrages in mehreren Raten möglich (pro rata temporis).

Bildungsweg Microsoft SQL Server



Datenbanken und SQL-Server Grundlagen und Technologie



© ZFI AG 2009