

# Kurs-Dokumentation



**Zentrum für Informatik ZFI AG**

## **Developing a Microsoft SQL Server 2012 Database (S1IM) - IT Ausbildung nach Mass**

<http://www.zfi.ch/S1IM>

Weitere Infos finden Sie unter [www.zfi.ch](http://www.zfi.ch) oder via Adresse:

**Zentrum für Informatik ZFI AG  
Zentralsekretariat  
Technoparkstrasse 1  
CH-8005 Zürich  
Telefon: 044 732 40 00  
Telefax: 044 732 40 09**

**Zürich, Basel, Bern, Zürich, Schweiz**

<b>Titel</b>	<b>Developing a Microsoft SQL Server 2012 Database</b>
<b>Untertitel</b>	
<b>Einleitung</b>	<b>dieser Kurs ist in Vorbereitung.</b>
<b>Ihr Nutzen</b>	
<b>Voraussetzungen</b>	
<b>Teilnehmerkreis</b>	
<b>Unterlagen</b>	
<b>Folgekurse</b>	
<b>Inhalt</b>	<ul style="list-style-type: none"><li>- Introduction to SQL Server 2012 and its Toolset- Introduction to SQL Server Platform</li> <li>- Working with SQL Server Tools</li> <li>- Configuring SQL Server Services</li> <li>- Working with Data Types- Using Data Types</li> <li>- Working with Character Data</li> <li>- Converting Data Types</li> <li>- Specialized Data Types</li> <li>- Designing and Implementing Tables- Designing Tables</li> <li>- Working with Schemas</li> <li>- Creating and Altering Tables</li> <li>- Ensuring Data Integrity through Constraints- Enforcing Data Integrity</li> <li>- Implementing Domain Integrity</li> <li>- Implementing Entity and Referential Integrity</li> <li>- Planning for SQL Server 2012 Indexing- Core Indexing Concepts</li> <li>- Data Types and Indexes</li> <li>- Single Column and Composite Indexes</li> <li>- Implementing Table Structures in SQL Server 2012- SQL Server Table Structures</li> <li>- Working with Clustered Indexes</li></ul>

- Designing Effective Clustered Indexes
  
- Reading SQL Server 2012 Execution Plans- Execution Plan Core Concepts
  
- Common Execution Plan Elements
  
- Working with Execution Plans
  
- Improving Performance through Nonclustered Indexes- Designing Effective Nonclustered Indexes
  
- Implementing Nonclustered Indexes
  
- Using the Database Engine Tuning Advisor
  
- Designing and Implementing Views- Introduction to Views
  
- Creating and Managing Views
  
- Performance Considerations for Views
  
- Designing and Implementing Stored Procedures- Introduction to Stored Procedures
  
- Working with Stored Procedures
  
- Implementing Parameterized Stored Procedures
  
- Controlling Execution Context
  
- Merging Data and Passing Tables- Using the MERGE Statement
  
- Implementing Table Types
  
- Using TABLE Types as Parameters
  
- Designing and Implementing User-defined Functions- Overview of Functions
  
- Designing and Implementing Scalar Functions
  
- Designing and Implementing Table-Valued Functions

- Implementation Considerations for Functions
  - Alternatives to Functions
  
  - Creating Highly Concurrent SQL Server 2012 Applications- Introduction to Transactions
  - Introduction to Locks
  - Management of Locking
  - Transaction Isolation Levels
  
  - Handling Errors in T-SQL Code- Understanding T-SQL Error Handling
  - Implementing T-SQL Error Handling
  - Implementing Structured Exception Handling
- Responding to Data Manipulation via Trigger- Designing DML Triggers
- Implementing DML Triggers
  - Advanced Trigger Concepts

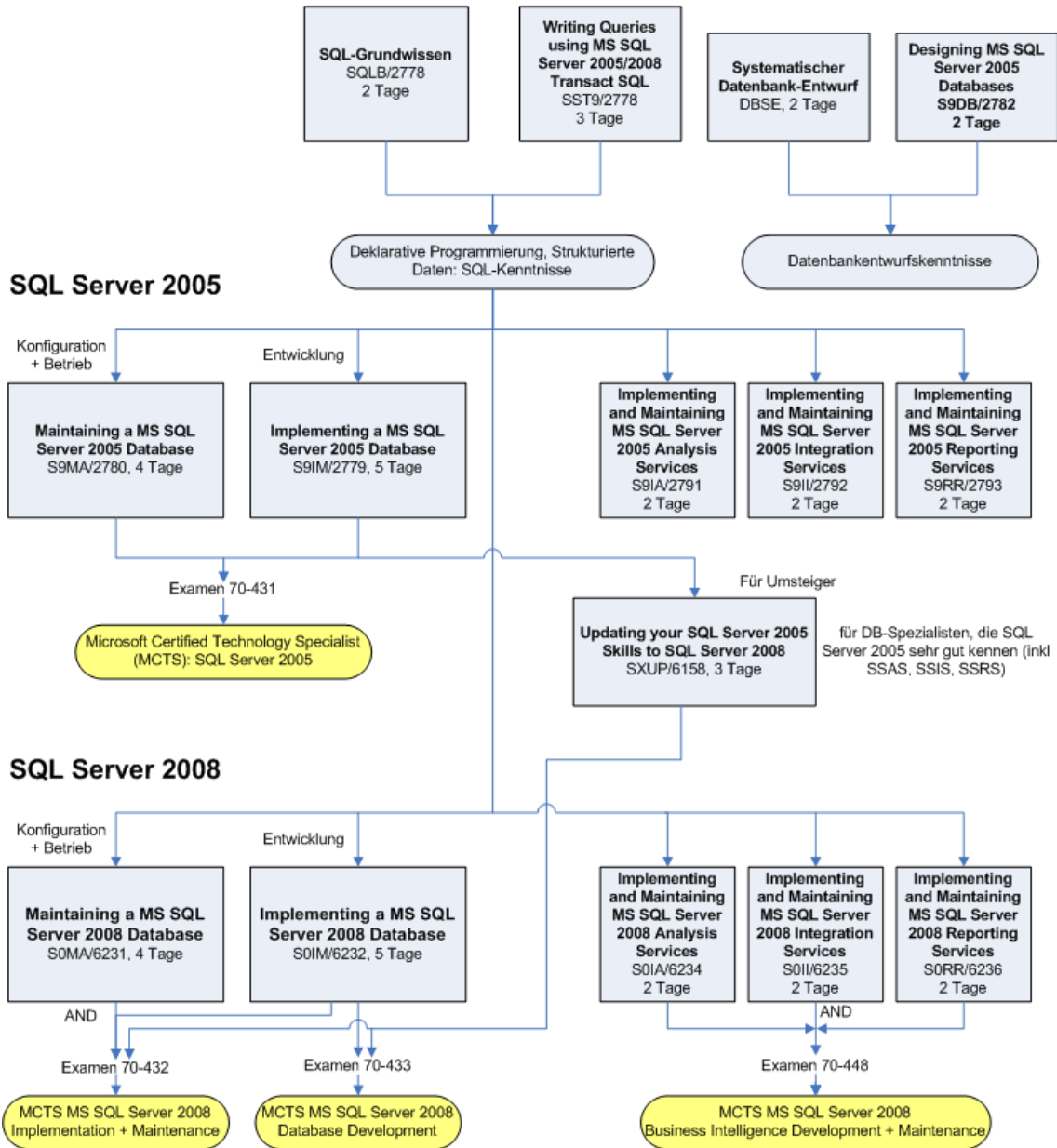
**Beitrag**

Der Teilnehmerbeitrag versteht sich rein netto. Das ZFI ist (gemäss MwSt-Gesetz) nicht Mehrwertsteuerpflichtig und erhebt somit keine MwSt. Bei länger als einen Monat dauernden Lehrgängen ist die Zahlung des Teilnehmerbeitrages in mehreren Raten möglich (pro rata temporis).

# Bildungsweg Microsoft SQL Server



## Datenbanken und SQL-Server Grundlagen und Technologie



© ZFI AG 2009