

Kurs-Dokumentation



Zentrum für Informatik ZFI AG

Developing a Microsoft SQL Server 2012

Database (S1IM-0312) -IT Ausbildung nach Mass

<http://www.zfi.ch/S1IM-0312>

Weitere Infos finden Sie unter www.zfi.ch oder via Adresse:

**Zentrum für Informatik ZFI AG
Zentralsekretariat
Technoparkstrasse 1
CH-8005 Zürich
Telefon: 044 732 40 00
Telefax: 044 732 40 09**

Zürich, Basel, Bern, Zürich, Schweiz

Titel	Developing a Microsoft SQL Server 2012 Database
Untertitel	
Einleitung	dieser Kurs ist in Vorbereitung.
Ihr Nutzen	
Voraussetzungen	
Teilnehmerkreis	
Unterlagen	
Folgekurse	
Inhalt	<ul style="list-style-type: none">- Introduction to SQL Server 2012 and its Toolset- Introduction to SQL Server Platform - Working with SQL Server Tools - Configuring SQL Server Services - Working with Data Types- Using Data Types - Working with Character Data - Converting Data Types - Specialized Data Types - Designing and Implementing Tables- Designing Tables - Working with Schemas - Creating and Altering Tables - Ensuring Data Integrity through Constraints- Enforcing Data Integrity - Implementing Domain Integrity - Implementing Entity and Referential Integrity - Planning for SQL Server 2012 Indexing- Core Indexing Concepts - Data Types and Indexes - Single Column and Composite Indexes - Implementing Table Structures in SQL Server 2012- SQL Server Table Structures - Working with Clustered Indexes

- Designing Effective Clustered Indexes

- Reading SQL Server 2012 Execution Plans- Execution Plan Core Concepts

- Common Execution Plan Elements

- Working with Execution Plans

- Improving Performance through Nonclustered Indexes- Designing Effective Nonclustered Indexes

- Implementing Nonclustered Indexes

- Using the Database Engine Tuning Advisor

- Designing and Implementing Views- Introduction to Views

- Creating and Managing Views

- Performance Considerations for Views

- Designing and Implementing Stored Procedures- Introduction to Stored Procedures

- Working with Stored Procedures

- Implementing Parameterized Stored Procedures

- Controlling Execution Context

- Merging Data and Passing Tables- Using the MERGE Statement

- Implementing Table Types

- Using TABLE Types as Parameters

- Designing and Implementing User-defined Functions- Overview of Functions

- Designing and Implementing Scalar Functions

- Designing and Implementing Table-Valued Functions

- Implementation Considerations for Functions
 - Alternatives to Functions
 - Creating Highly Concurrent SQL Server 2012 Applications- Introduction to Transactions
 - Introduction to Locks
 - Management of Locking
 - Transaction Isolation Levels
 - Handling Errors in T-SQL Code- Understanding T-SQL Error Handling
 - Implementing T-SQL Error Handling
 - Implementing Structured Exception Handling
- Responding to Data Manipulation via Trigger- Designing DML Triggers
- Implementing DML Triggers
 - Advanced Trigger Concepts

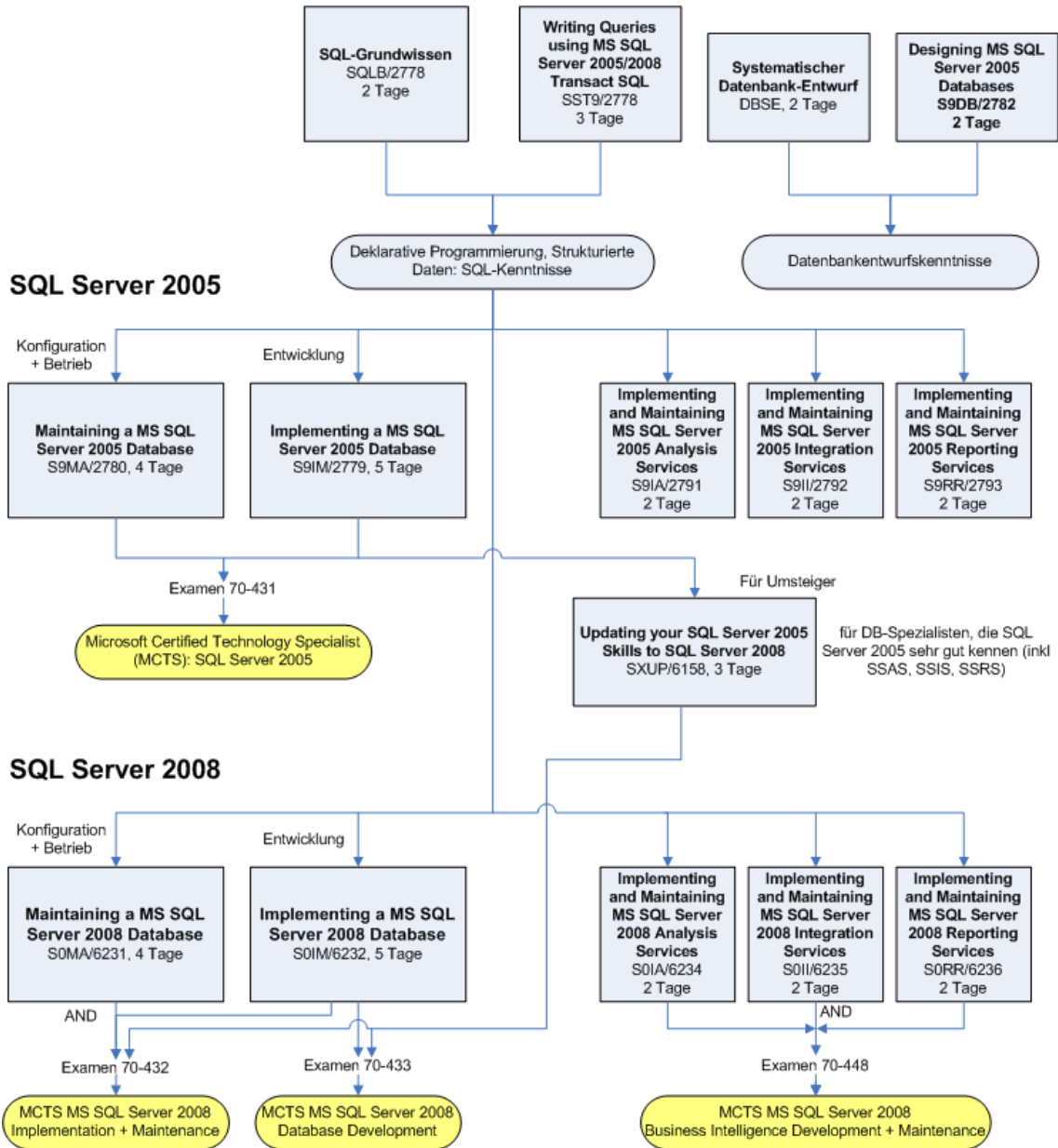
Beitrag

Der Teilnehmerbeitrag versteht sich rein netto. Das ZFI ist (gemäss MwSt-Gesetz) nicht Mehrwertsteuerpflichtig und erhebt somit keine MwSt. Bei länger als einen Monat dauernden Lehrgängen ist die Zahlung des Teilnehmerbeitrages in mehreren Raten möglich (pro rata temporis).

Bildungsweg Microsoft SQL Server



Datenbanken und SQL-Server Grundlagen und Technologie



© ZFI AG 2009