

# Kurs-Dokumentation



## Zentrum für Informatik ZFI AG

# BI: Implementing a Data Warehouse with Microsoft SQL Server 2012 (S1BI-0312) -IT Ausbildung nach Mass

<http://www.zfi.ch/S1BI-0312>

Weitere Infos finden Sie unter [www.zfi.ch](http://www.zfi.ch) oder via Adresse:

Zentrum für Informatik ZFI AG  
Zentralsekretariat  
Technoparkstrasse 1  
CH-8005 Zürich  
Telefon: 044 732 40 00  
Telefax: 044 732 40 09

Zürich, Basel, Bern, Zürich, Schweiz

<b>Titel</b>	<b>BI: Implementing a Data Warehouse with Microsoft SQL Server 2012</b>
<b>Untertitel</b>	
<b>Einleitung</b>	<b>This 5-day instructor-led course describes how to implement a BI platform to support information worker analytics. Students will learn how to create a data warehouse with SQL Server 2012, implement ETL with SQL Server Integration Services, and validate and cleanse data with SQL Server Data Quality Services and SQL Server Master Data Services. This course helps people prepare for the exam 70-463.</b>
<b>Ihr Nutzen</b>	<b>After completing this course, students will be able to:</b> <b>Describe data warehouse concepts and architecture considerations.</b> <b>Select an appropriate hardware platform for a data warehouse.</b> <b>Design and implement a data warehouse.</b> <b>Implement Data Flow in an SSIS Package.</b> <b>Implement Data Flow in an SSIS Package.</b> <b>Debug and Troubleshoot SSIS packages.</b> <b>Implement an SSIS solution that supports incremental DW loads and changing data.</b> <b>Integrate cloud data into a data warehouse ecosystem infrastructure.</b> <b>Implement data cleansing by using Microsoft Data Quality Services.</b> <b>Implement Master Data Services to enforce data integrity at source.</b> <b>Extend SSIS with custom scripts and components.</b> <b>Deploy and Configure SSIS packages.</b> <b>Describe how information workers can consume data from the data warehouse.</b>
<b>Voraussetzungen</b>	<b>In addition to their professional experience, students who attend this training should have technical knowledge equivalent to the following course:</b> <b>Writing Queries with Microsoft SQL Server Transact-SQL (ZFI-Kurscode SST9)</b>
<b>Teilnehmerkreis</b>	<b>The primary audience for this course are database professionals who need to fulfil a Business Intelligence Developer role. They will need to focus on hands-on work creating BI solutions including Data Warehouse implementation, ETL, and data cleansing. Primary responsibilities will include:</b> <b>Implementing as data warehouse</b> <b>Developing SSIS packages for data extraction and loading/transfer/transformation</b> <b>Enforcing data integrity using Master Data Services</b> <b>Cleansing data using Data Quality Services</b>
<b>Unterlagen</b>	
<b>Folgekurse</b>	
<b>Inhalt</b>	<ul style="list-style-type: none"> <li>- Introduction to data warehousing</li> <li>- Describe data warehouse concepts and architecture considerations</li>   <li>- Considerations for data warehouse solution</li>   <li>- Data warehouse hardware considerations</li> </ul>

- The challenges of building a data warehouse
- Data warehouse reference architectures
- Data warehouse appliances
- Designing and implementing a data warehouse
- Logical design for a data warehouse
- Physical design for a data warehouse
- Design an implement a schema for a data warehouse
- Introduction to ETL with SSIS
- Exploring source data
- Implementing data flow
- Implementing control flow in an SSIS package
- Introduction to control flow
- Creating dynamic packages
- Using containers
- Managing Consistency
- Debugging an troubleshooting SSIS packages
- Debugging an SSIS package
- Logging SSIS package execution
- Implementing an event handler

- Handling errors in a data flow
  
- Implementing an incremental ETL process
- Introduction to incremental ETL
  
- Extracting modified data
  
- Loading modified data
  
- Incorporating data from the cloud in a data warehouse
- Overview of cloud data sources
  
- SQL Server Azure
  
- Azure data market
  
- Enforcing data quality
- Introduction to data cleansing
  
- Using data quality services to cleanse data
  
- Using data quality services to match data
  
- Using master data services
- Master data services concepts
  
- Implementing a master data services model
  
- Using the master data services excel add-in
  
- Extending SISS

- Using custom components in SSIS
- Using Scripting in SSIS
- Deploying and configuring SSIS packages
- Overview of deployment
- Deploying SSIS projects
- Planning SSIS package execution
- Consuming data in a data warehouse
- Using excel to analyze data in a data warehouse
- An introduction to PowerPivot
- An Introduction to crescent

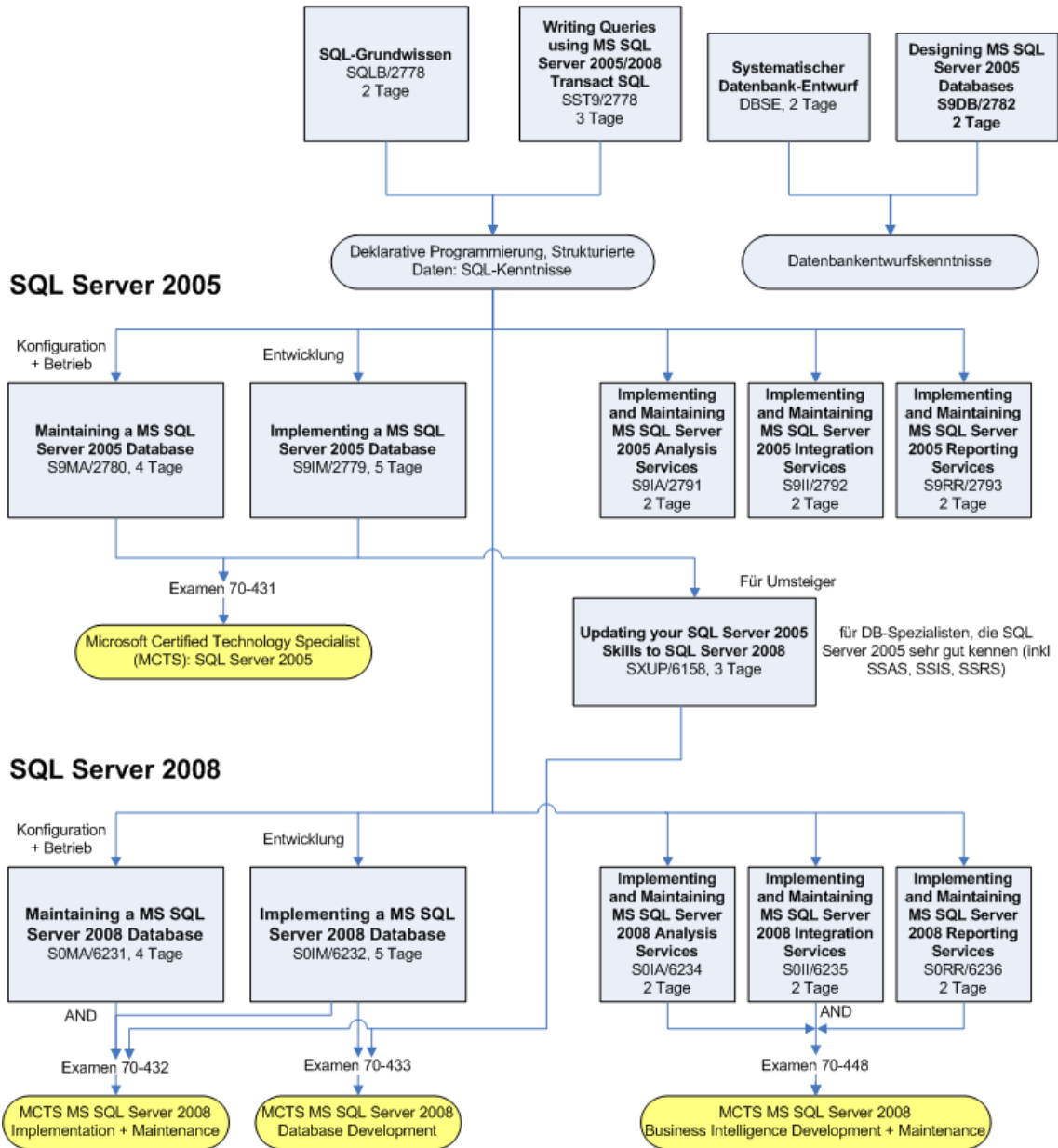
**Beitrag**

Der Teilnehmerbeitrag versteht sich rein netto. Das ZFI ist (gemäss MwSt-Gesetz) nicht Mehrwertsteuerpflichtig und erhebt somit keine MwSt. Bei länger als einen Monat dauernden Lehrgängen ist die Zahlung des Teilnehmerbeitrages in mehreren Raten möglich (pro rata temporis).

# Bildungsweg Microsoft SQL Server



## Datenbanken und SQL-Server Grundlagen und Technologie



© ZFI AG 2009