

Kurs-Dokumentation



Zentrum für Informatik ZFI AG

**Implementing and Maintaining Microsoft SQL
Server 2008 Integration Services (S0II-0511)**

-IT Ausbildung nach Mass

<http://www.zfi.ch/S0II-0511>

Weitere Infos finden Sie unter www.zfi.ch oder via Adresse:

**Zentrum für Informatik ZFI AG
Zentralsekretariat
Technoparkstrasse 1
CH-8005 Zürich
Telefon: 044 732 40 00
Telefax: 044 732 40 09**

Zürich, Basel, Bern, Zürich, Schweiz

Titel	Implementing and Maintaining Microsoft SQL Server 2008 Integration Services
Untertitel	Einführung in SSIS
Einleitung	This two-day instructor-led course teaches students how to implement an Integration Services solution in an organization. The course discusses how to develop, deploy, and manage Integration Services packages.
Ihr Nutzen	<p>At Course CompletionAfter completing this course, students will be able to:</p> <ul style="list-style-type: none"> - Describe SQL Server Integration Services and its tools. - Create an Integration Services package. - Implement control flow in an Integration Services package. - Implement data flow in an Integration Services package. - Implement logging in an Integration Services package. - Debug and implement error handling in an Integration Services package. - Implement checkpoints and transactions in an Integration Services package. - Deploy an Integration Services package. - Manage and secure an Integration Services package.
Voraussetzungen	<p>Before attending this course, students must have:</p> <ul style="list-style-type: none"> - Exposure to enterprise data import and export scenarios. - Experience navigating the Microsoft Windows Server environment. - Experience with Microsoft SQL Server, including: <ul style="list-style-type: none"> - SQL Server Agent. - SQL Server query language (SELECT, UPDATE, INSERT, and DELETE). - SQL Server System tables. - SQL Server accounts (users and permissions). <p>In addition, it is recommended, but not required, that students have completed:</p> <ul style="list-style-type: none"> - Course 6231: Maintaining a Microsoft SQL Server 2008 Database. - Course 6232: Implementing a Microsoft SQL Server 2008 Database.
Teilnehmerkreis	This course is intended for information technology (IT) professionals and developers who need to implement data transfer or extract, transform, and load (ETL) solutions by using Microsoft SQL Server 2008 Integration Services.
Unterlagen	Original Microsoft Kursunterlagen
Folgekurse	
Inhalt	<p>- Introduction to SQL Server 2008 Integration Services Overview of SQL Server Integration Services Using Integration Services Tools</p> <p>Developing Integration Services Solutions Creating an Integration Services Solution Using Variables Building and Running a Solution</p> <p>Implementing Control Flow Control Flow Tasks Control Flow Precedent Constraints Control Flow Containers</p> <p>Implementing Data Flow Data Flow Sources and Destinations Basic Data</p>

Flow TransformationsAdvanced Data Flow TransformationsData Flow Paths

Implementing LoggingOverview of Integration Services LoggingUsing Logging

Debugging and Error HandlingDebugging a PackageImplementing Error Handling

Implementing Checkpoints and TransactionsImplementing CheckpointsImplementing Transactions

Configuring and Deploying PackagesPackage ConfigurationsPreparing and Deploying Packages

Managing and Securing PackagesManaging PackagesSecuring Packages

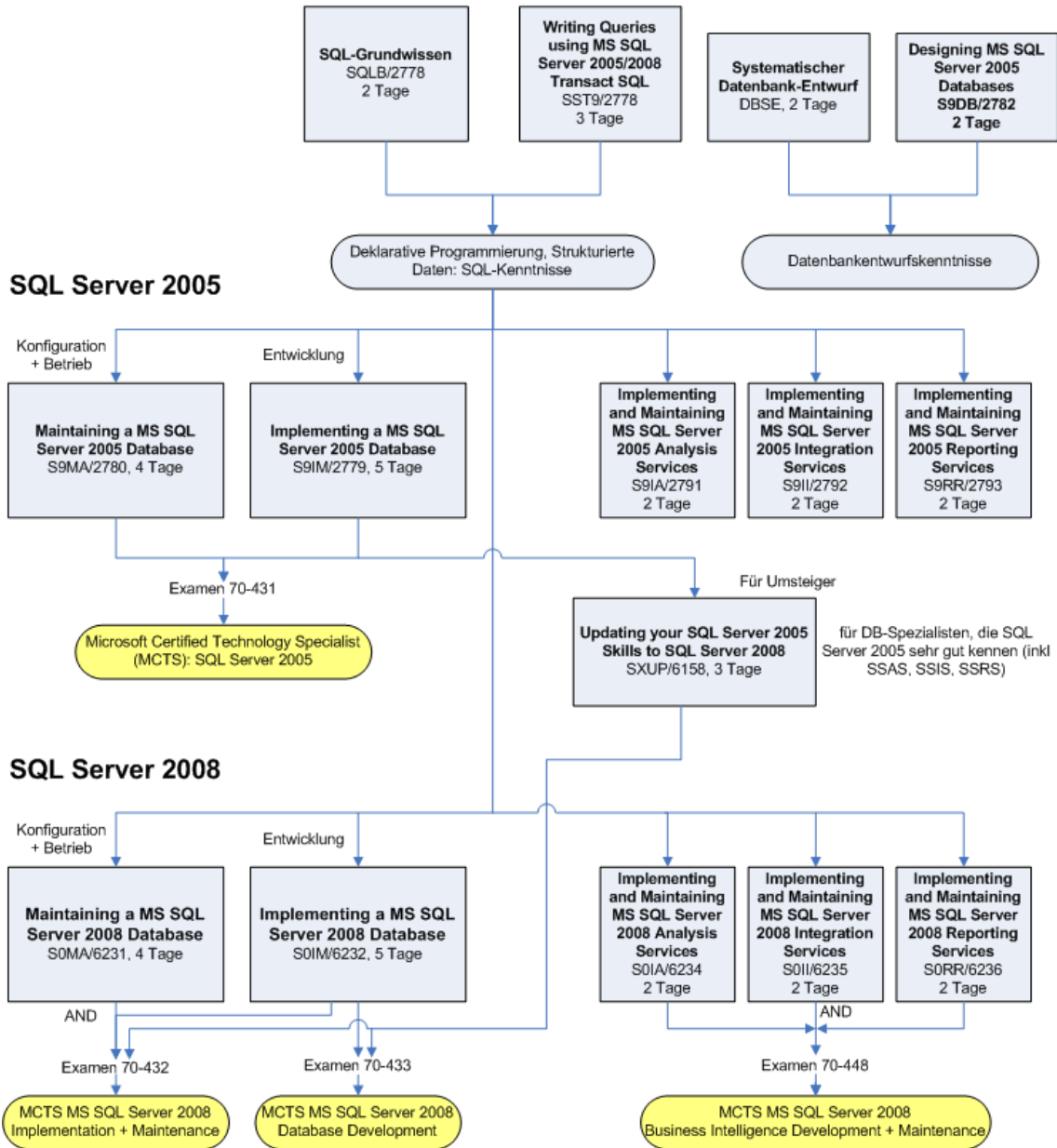
Beitrag

Der Teilnehmerbeitrag versteht sich rein netto. Das ZFI ist (gemäss MwSt-Gesetz) nicht Mehrwertsteuerpflichtig und erhebt somit keine MwSt. Bei länger als einen Monat dauernden Lehrgängen ist die Zahlung des Teilnehmerbeitrages in mehreren Raten möglich (pro rata temporis).

Bildungsweg Microsoft SQL Server



Datenbanken und SQL-Server Grundlagen und Technologie



© ZFI AG 2009